

Medication Guide
SUBSYS® (sub sis)
(fentanyl) sublingual spray, CII

Important information about SUBSYS:

Do not use SUBSYS unless you are regularly using another opioid pain medicine around-the-clock for at least one week or longer for your cancer pain and your body is used to these medicines (this means that you are opioid tolerant). You can ask your healthcare provider if you are opioid tolerant.

Keep SUBSYS in a safe place away from children.

Get emergency help right away if:

- **A child uses SUBSYS. SUBSYS can cause an overdose and death in any child who uses it,**
- **An adult who has not been prescribed SUBSYS uses it,**
- **An adult who is not already taking opioids around-the-clock uses SUBSYS,**

These are medical emergencies that can cause death.

SUBSYS is:

- A strong prescription pain medicine that contains an opioid (narcotic) that is used to manage breakthrough pain in adults (18 years of age and older) with cancer who are already routinely taking other opioid pain medicines around-the-clock for cancer pain. SUBSYS is started only after you have been taking other opioid pain medicines and your body has become used to them (you are opioid tolerant). Do not use SUBSYS if you are not opioid tolerant.
- An opioid pain medicine that can put you at risk for overdose and death. Even if you take your dose correctly as prescribed you are at risk for opioid addiction, abuse, and misuse that can lead to death.

Important information about SUBSYS:

- **Get emergency help or call 911 right away if you take too much SUBSYS (overdose).** When you first start taking SUBSYS, when your dose is changed, or if you take too much (overdose), serious or life-threatening breathing problems that can lead to death may occur. Talk to your healthcare provider about naloxone, a medicine for the emergency treatment of an opioid overdose.
- Taking SUBSYS with other opioid medicines, that may make you sleepy, such as other pain medicines, anti-depressants, sleeping pills, anti-anxiety medicines, antihistamines, or tranquilizers, or with alcohol or street drugs can cause severe drowsiness, confusion, breathing problems, coma, and death.
- Never give anyone else your SUBSYS. They could die from taking it. Selling or giving away SUBSYS is against the law.
- If you stop taking your around-the-clock opioid pain medicine for your cancer pain, **you must stop** using SUBSYS. You may no longer be opioid tolerant. Talk to your healthcare provider about how to treat your pain.
- Store SUBSYS securely, out of sight and reach of children, in a location not accessible by others, including visitors to the home. SUBSYS is available only through a program called the **Transmucosal Immediate Release Fentanyl (TIRF) Risk Evaluation and Mitigation Strategy (REMS)**. To receive SUBSYS, you must:
 - talk to your healthcare provider
 - understand the benefits and risks of SUBSYS
 - agree to all of the instructions
 - sign the Patient Enrollment Form
- SUBSYS is only available at pharmacies that are part of the TIRF REMS. Your healthcare provider can help you locate a pharmacy closest to your home where you can have your SUBSYS prescription filled.
- Be very careful about taking other medicines that may make you sleepy, such as other pain medicines, anti-depressants, sleeping pills, anti-anxiety medicines, antihistamines, or tranquilizers.
- Know the medicines you take. Keep a list of them to show your healthcare provider and pharmacist when you get a new medicine.

Do not take SUBSYS if:

- You are not opioid tolerant. Opioid tolerant means that you are already taking other opioid pain medicines around-the-clock for your cancer pain, and your body is used to these medicines.
- You have severe asthma, trouble breathing, or other lung problems.
- You have a bowel blockage or have narrowing of the stomach or intestines.

- You have a short-term pain that you would expect to go away in a few days, such as:
 - pain after surgery
 - headache or migraine
 - dental pain
- You have an allergy to any of the ingredients in SUBSYS:
 - Active ingredient: fentanyl
 - Inactive ingredients: dehydrated alcohol 63.6%, purified water, propylene glycol, xylitol, and L-menthol.

Before taking SUBSYS, tell your healthcare provider if you have a history of:

- **Trouble breathing or lung problems such as asthma, wheezing, or shortness of breath**
- head injury, seizures
- problems urinating
- abuse of street or prescription drugs, alcohol addiction, or opioid overdose
- mental problems including major depression, schizophrenia, or hallucinations (seeing or hearing things that are not there)
- Slow heart rate or other heart problems
- Low blood pressure
- liver, kidney, or thyroid problems
- pancreas or gallbladder problems

Tell your healthcare provider if you are:

- **Pregnant or planning to become pregnant.** Prolonged use of SUBSYS during pregnancy can cause withdrawal symptoms in your newborn baby that could be life-threatening if not recognized and treated.
- **Breastfeeding.** SUBSYS passes into breast milk and may harm your baby.
- Living in a household where there are small children or someone who has abused street or prescription drugs
- Taking prescription or over-the-counter medicines, vitamins, or herbal supplements. Taking SUBSYS with certain other medicines can cause serious side effects that could lead to death.

When taking SUBSYS:

- Do not change your dose. Take SUBSYS exactly as prescribed by your healthcare provider.
- See the detailed Instructions for Use for information about how to take SUBSYS.
- Use SUBSYS exactly as prescribed by your healthcare provider. Do not use more than two doses of SUBSYS for each episode of breakthrough cancer pain. You must wait four hours before treating a new episode of breakthrough pain with SUBSYS.
- Your healthcare provider will prescribe a starting dose of SUBSYS that may be different than other fentanyl containing medicines you may have been taking.
- Do not stop taking SUBSYS without talking to your healthcare provider.
- After you stop taking SUBSYS, see the “Instructions for Use” section at the end of this Medication Guide for information about the right way to dispose of SUBSYS when no longer needed.
- Dispose of expired, unwanted or unused SUBSYS by following the “Disposing of SUBSYS” directions in the *Instructions for Use*. Visit www.fda.gov/drugdisposal for additional information on disposal of unused medicines.

- **DO NOT** drive or operate heavy machinery, until you know how SUBSYS affects you. SUBSYS can make you sleepy, dizzy, or lightheaded.
- **DO NOT** drink alcohol or use prescription or over-the-counter medicines that contain alcohol. Using products containing alcohol during treatment with SUBSYS may cause you to overdose and die.
- **DO NOT** switch from SUBSYS to other medicines that contain fentanyl without talking with your healthcare provider. The amount of fentanyl in a dose of SUBSYS is not the same as the amount of fentanyl in other medicines that contain fentanyl.

The possible side effects of SUBSYS:

- Constipation, nausea, sleepiness, vomiting, tiredness, headache, dizziness, abdominal pain, weakness, anxiety, depression, rash, trouble sleeping, low red blood cell count, swelling of the arms, hands, legs, and feet. Call your healthcare provider if you have any of these symptoms and they are severe.
- Decreased blood pressure. This can make you feel dizzy or lightheaded if you get up too fast from sitting or lying down.

Get emergency medical help or call 911 right away if you have:

- Trouble breathing, shortness of breath, fast heartbeat, chest pain, swelling of your face, tongue, or throat, extreme drowsiness, light-headedness when changing positions, feeling faint, agitation, high body temperature, trouble walking, stiff muscles, or mental changes such as confusion.

These are not all the possible side effects of SUBSYS. Call your doctor for medical advice about side effects. You may report side effects to FDA at 1-800-FDA-1088. **For more information go to dailymed.nlm.nih.gov**

Manufactured by: Renaissance Lakewood, LLC., Lakewood, NJ 08701 Distributed by: West Therapeutic Development, LLC., Northbrook, IL 60062 (1-844-452-9263)

This Medication Guide has been approved by the U.S. Food and Drug Administration.

Issued: 03/2021

Child Safety Kit

The SUBSYS Child Safety Kit contains important information on the storage and handling of SUBSYS.

The SUBSYS Child Safety Kit includes:

- a **portable pouch (Figure A) and lock (Figure B)** for you to keep a small supply of SUBSYS. Keep the rest of your SUBSYS in the locked storage space.

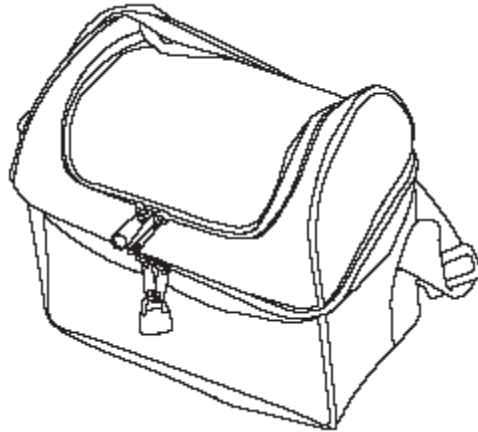


Figure A

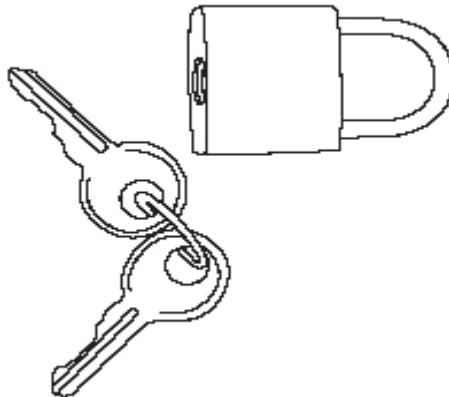


Figure B

- a **package of cabinet and drawer child safety latches (Figure C)** to secure the storage space where SUBSYS is kept at home.

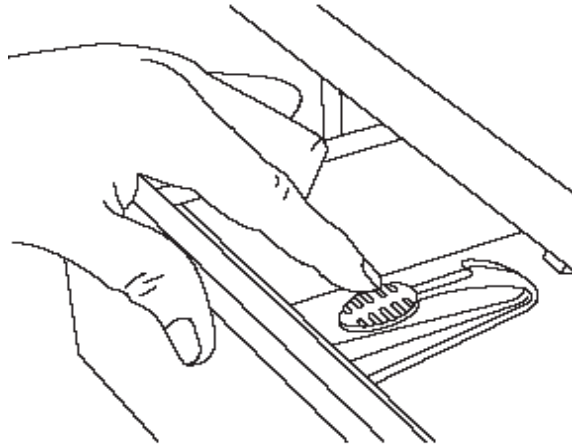


Figure C

- Keep the pouch locked and away from children. **(See Figure C.)**

Instructions for Use

Before you use SUBSYS, it is important that you read the Medication Guide and these Instructions for Use. Be sure that you read, understand, and follow these Instructions for Use so that you use SUBSYS the right way. Ask your healthcare provider or pharmacist if you have questions about the right way to use SUBSYS.

What will I find in the SUBSYS package?

Each SUBSYS Carton contains **(See Figure D)**:

- individual blister packages containing spray units of SUBSYS
- a supply of small white disposal bags for use when disposing of used SUBSYS units and charcoal-lined disposal pouches
- a supply of charcoal-lined disposal pouches (wrapped in aluminum foil) for use when disposing of the contents of unused SUBSYS units
 - ***Call West Therapeutic Development, LLC. at 1-844-452-9263 for additional supplies of disposal bags and charcoal-lined disposal pouches.***
- a Medication Guide (not shown)
- a Package Insert (not shown)
- **When you get an episode of breakthrough cancer pain, take the dose prescribed by your healthcare provider as follows:** SUBSYS comes in individual blister packages. Do not open the blister package until you are ready to use it.

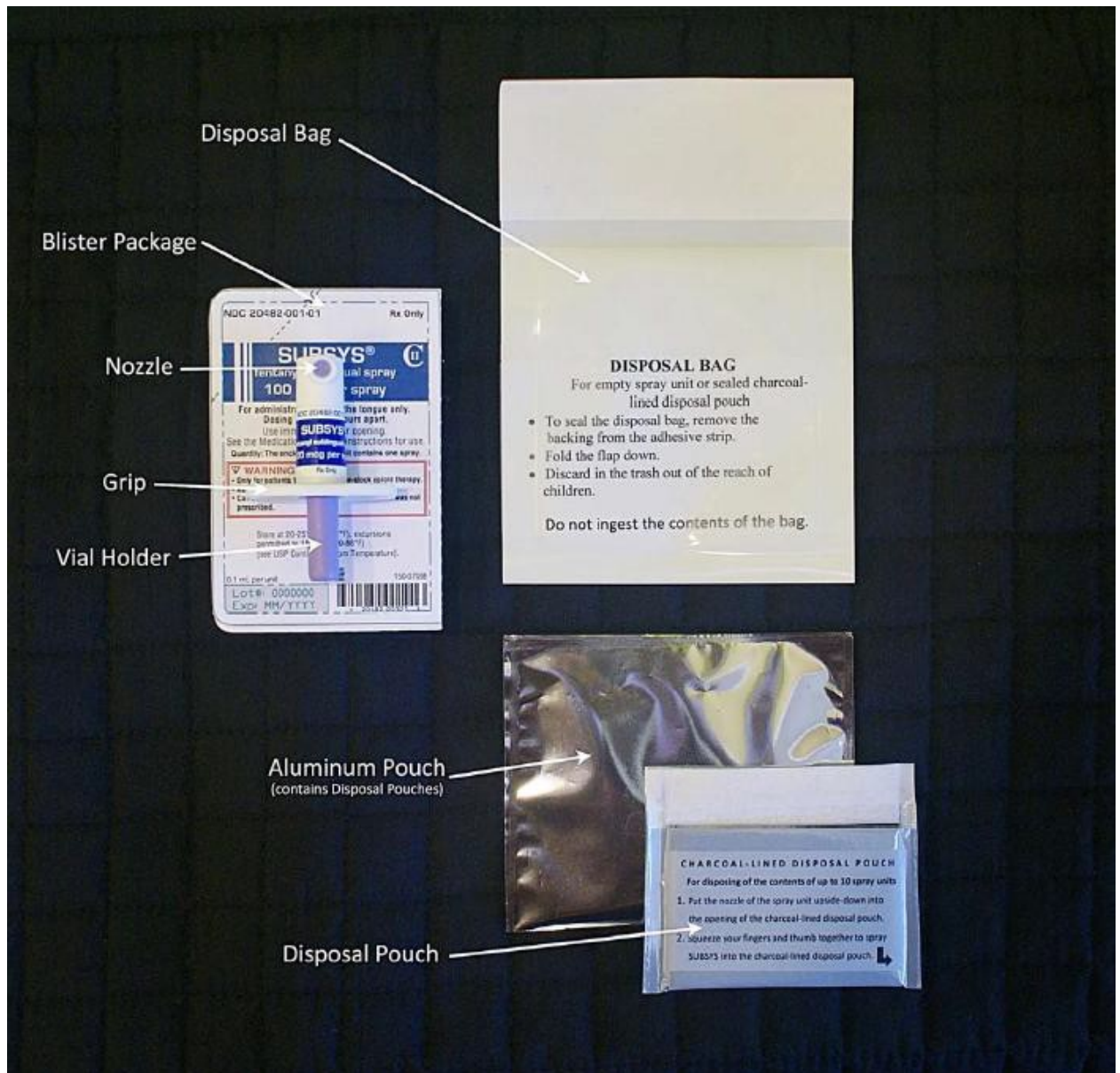


Figure D

- Remove the SUBSYS spray unit from the blister package by cutting the dashed line with a pair of scissors. **(See Figure E.)**



Figure E

- To correctly use SUBSYS:
 - Swallow any saliva in your mouth.
 - Hold the SUBSYS spray unit **upright** using your index and middle fingers and thumb. **(See Figure F.)**

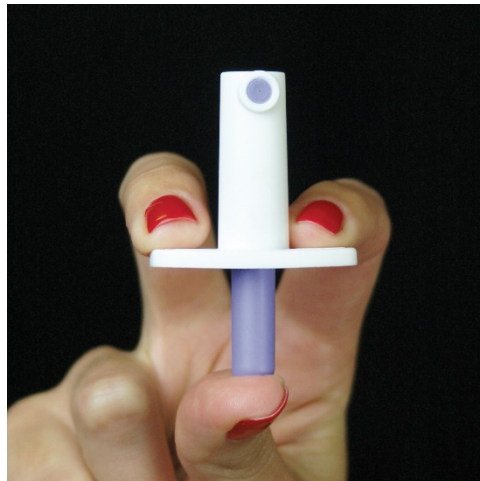


Figure F

- Point the nozzle **into** your mouth and **under** your tongue. **(See Figures G and H)**



Figure G



Figure H

- Squeeze your fingers and thumb together to spray SUBSYS under your tongue. **(See Figure I)**
- Hold the medicine under your tongue for **30-60 seconds**. Do not spit out any medicine. Do not rinse your mouth.



Figure I

- The SUBSYS spray unit will remain locked after use. **(See Figure J)**

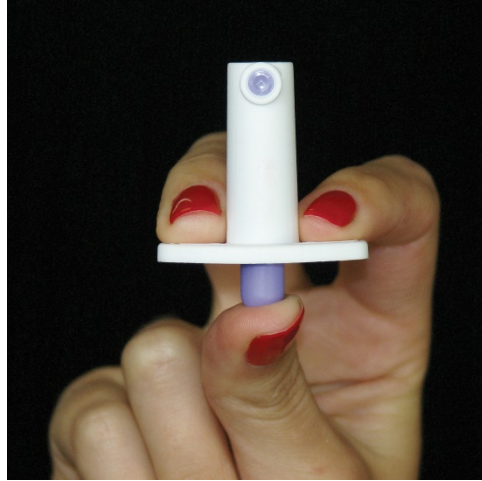


Figure J

Disposing of SUBSYS:

After using SUBSYS, dispose of the spray unit as follows:

- Place the used SUBSYS spray unit into one of the disposal bags provided in the carton containing the spray units. **(See Figure K)**

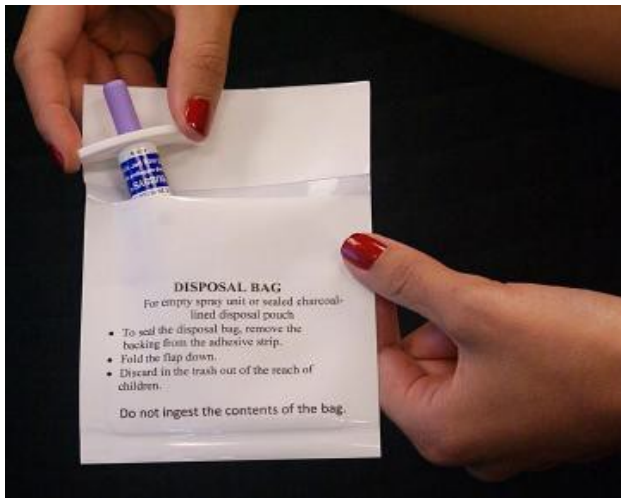


Figure K

- Remove the backing from the adhesive strip.
- Fold the flap to seal the bag. **(See Figure L)**



Figure L

- Discard in the trash out of the reach of children. **(See Figure M)**



Figure M

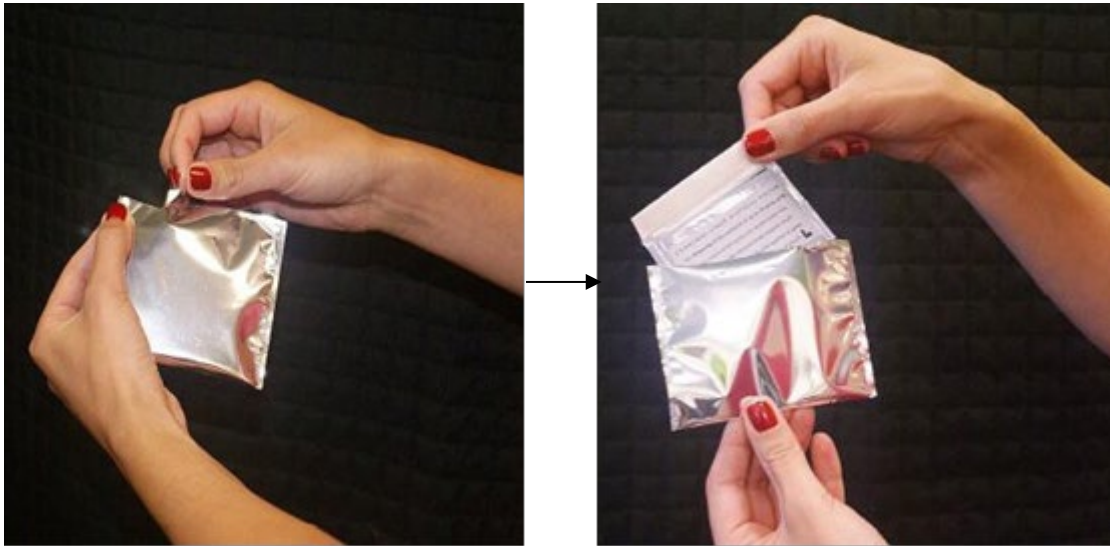
Do not ingest the contents of the bag.

Disposal of any unused SUBSYS when no longer needed:

Before you throw away the SUBSYS spray units, you must empty all of the medicine into the charcoal-lined disposal pouch. This protects others, especially children, from harm.

Charcoal-lined disposal pouches are supplied wrapped in an aluminum foil package.

- Remove a charcoal-lined disposal pouch from the aluminum foil package by tearing open the package at the notch. **(See Figures N)**



Figure

N

- Remove the SUBSYS spray unit from the blister package by cutting the dashed line with a pair of scissors. **(See Figure O)**



Figure O

- Hold the charcoal-lined disposal pouch with the opening facing up. Put the nozzle of the SUBSYS spray unit upside-down into the opening of the charcoal-lined disposal pouch. **(See Figure P)**



Figure P

- Squeeze your fingers and thumb together to spray SUBSYS into the charcoal-lined disposal pouch.
- Dispose of the spray unit in a disposal bag. **(See Figures K and L)**
- **Repeat steps O and P for each unused SUBSYS spray unit. The charcoal-lined disposal pouch may be used for disposing of the contents of up to 10 spray units.**
- Make sure all unused spray units have been sprayed into a charcoal-lined disposal pouch.
To seal a used charcoal-lined disposal pouch, remove the backing from the adhesive strip. **(See Figure Q)** Fold the flap down and press to seal the charcoal-lined disposal pouch.



Figure Q

- Place the sealed charcoal-lined disposal pouch into a disposal bag. **(See Figure R)**



Figure R

- To seal the disposal bag, remove the backing from the adhesive strip. Fold the flap down and press to seal.
- Discard the sealed disposal bag in the trash out of the reach of children. **(See Figure S)**

